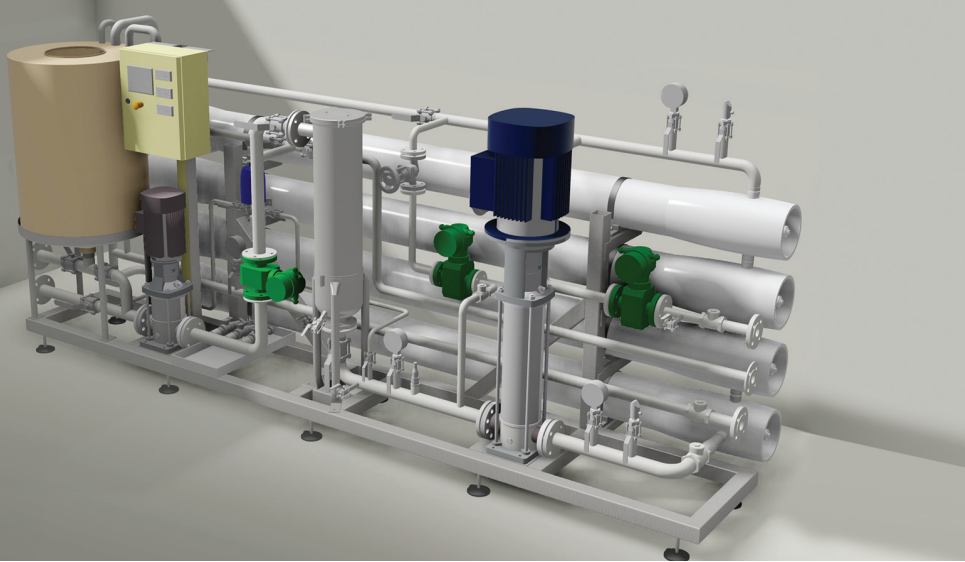


PACKAGED REVERSE OSMOSIS PLANTS



PROXA's ROPack range of Packaged Reverse Osmosis (RO) plants are designed to be a robust and stand-alone solution for a wide range of applications where high quality product water is required. The package plants are compact and easy to install. Operation is easy with minimum maintenance required.

TYPICAL APPLICATIONS

- Boiler feed water
- Pre-treatment for de-mineralised water production
- Wash and process water
- Potable water

OPERATING PARAMETERS

- Feed TDS < 2500mg/l
- Recovery 50 – 80%
- Nominal rejection 97 – 99%
- Temperature 15 – 35°C
- Operating pressure 10 – 16 bar
- Rated pressure PN16/PN25

PACKAGE PLANT FEATURES

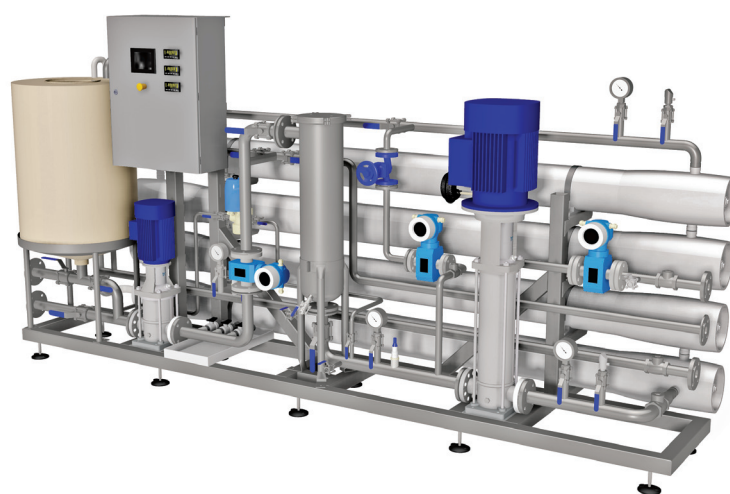
- Complete packaged RO desalination series with nominal permeate capacities of 2.5m³/h to 10m³/h
- Feed TDS up to 2500 mg/l at a temperature range of 10 – 35°C
- Easy installation and compact footprint
- Minimum infrastructure and utility requirements
- Integrated cleaning (CIP) system
- Manual or automated feed and recovery control
- Low pressure feed pump
- Cartridge filter
- High pressure feed pump with VSD
- Flow, pressure and analytical instrumentation
- 10" Touch screen control panel
- Optional dosing stations:
 - Anti-scale dosing
 - SMBS dosing
 - Feed pH adjustment
 - Disinfection dosing
- Optional SMS based alarm and trip notification

MATERIALS OF CONSTRUCTION

- Frame 304 SS
- Piping 316 SS
- Electrical panel CS – Powder coated

INSTRUMENTATION AND CONTROLS

- Flow meters (E+H)
 - Feed
 - Concentrate
- Pressure (WIKA)
 - Feed
 - Permeate
 - Concentrate
- Conductivity (E+H)
 - Feed
 - Permeate
- pH (E+H)
 - Feed (Optional)
- ORP (E+H)
 - Feed (Optional)
- Pneumatic actuated control valves
- Electrical actuated control valves (Optional)
- Schneider PLC with 10" Touch screen control panel



| MODEL | ROPACK-2.5 | ROPACK-5.0 | ROPACK-10.0 |
|--------------------|-----------------------------|----------------------------|-----------------------------|
| Permeate Flow Rate | 2.5 m ³ /h | 5 m ³ /h | 10 m ³ /h |
| Feed Flow Rate | 3.1 – 5.0 m ³ /h | 6.2 – 10 m ³ /h | 12.5 – 20 m ³ /h |
| Nominal Rejection | 97 – 99% | 97 – 99% | 97 – 99% |
| Pressure Rating | PN16/PN25 | PN16/PN25 | PN16/PN25 |

| LOW PRESSURE FEED PUMP/CIP PUMP | | | |
|---------------------------------|-------------|-------------|-------------|
| MOC | SS304/SS316 | SS304/SS316 | SS304/SS316 |
| Motor Power | 1.1 kW | 1.5 kW | 3 kW |

| HIGH PRESSURE FEED PUMP | | | |
|-------------------------|-------------|-------------|-------------|
| MOC | SS304/SS316 | SS304/SS316 | SS304/SS316 |
| Motor Power | 4 kW | 5.5 kW | 11 kW |

| MEMBRANE HOUSING AND ELEMENTS | | | |
|-------------------------------|---------------|---------------|---------------|
| Membrane Housing Type | 8", 3 element | 8", 3 element | 8", 3 element |
| Pressure Rating (Housing) | 300/450 PSI | 300/450 PSI | 300/450 PSI |
| MOC (Housing / Elements) | FRP/PA | FRP/PA | FRP/PA |

| BATTERY LIMITS AND UTILITY REQUIREMENTS | | | |
|--------------------------------------------|--------------------------|--------------------------|--------------------------|
| Feed | 40NB, BS4504 1600/3 | 50NB, BS4504 1600/3 | 50NB, BS4504 1600/3 |
| Permeate | 25NB, BS4504 1600/3 | 40NB, BS4504 1600/3 | 40NB, BS4504 1600/3 |
| Concentrate | 25NB, BS4504 4000/3 | 40NB, BS4504 4000/3 | 40NB, BS4504 4000/3 |
| CIP Waste | 25NB, BS4504 1600/3 | 40NB, BS4504 1600/3 | 40NB, BS4504 1600/3 |
| Instrument Air (Only for Pneumatic Option) | 5 – 7 bar, Dry, Oil Free | 5 – 7 bar, Dry, Oil Free | 5 – 7 bar, Dry, Oil Free |
| Electricity | 380V/3ph/50Hz | 380V/3ph/50Hz | 380V/3ph/50Hz |
| Power Installed | 6.1/8 kW | 8/10 kW | 10/15 kW |

| PACKAGE WEIGHT AND DIMENSIONS | | | |
|-------------------------------|-------------|---------------|---------------|
| Width | 1 065 mm | 1 065 mm | 1 065 mm |
| Length | 3 950 mm | 3 950 mm | 3 950 mm |
| Height | 2 000 mm | 2 000 mm | 2 000 mm |
| Weight (Empty / Operating) | 980/1750 kg | 1 050/1950 kg | 1 250/2150 kg |