

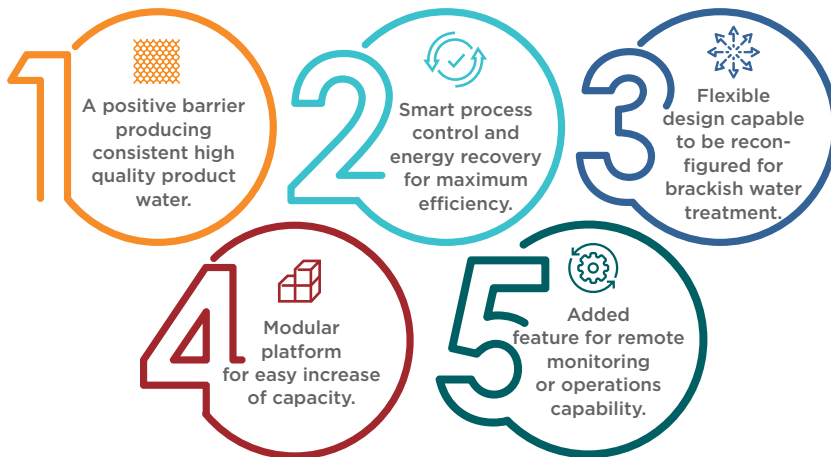
FreshPaa

SW

Smart
Seawater
desalination

The FreshPaa^{SW} is a fully automated sea water reverse osmosis (SWRO) system specifically designed for producing consistent, high quality desalinated water from high salinity sources, including seawater.

FreshPaa^{SW} provides a highly efficient seawater desalination platform with built in intelligence, developed from years of operating experience. It comes pre-commissioned, with the option of automatically linking up with PROXA's Remote Operations Center (ROC). Whether used in conjunction with the ClearPaa^{MMF} or ClearPaa^{ULTRA}, or part of an integrated treatment process, the FreshPaa^{SW} offers flexibility and robust reliability for peace of mind.



APPLICATIONS

- Desalination of seawater to potable standard
- Desalination of hypersaline borehole water to potable standard
- Brine minimization
- Varying salinity duty, from brackish to seawater

TYPICAL CLIENTS



Municipal water supply



Commercial developments



Industrial effluent water recovery



Industrial water supply

proxa
future focused

BENEFITS

- ▶ Superior product water quality
- ▶ Smart automation for maximum recovery
- ▶ Smart automation for maximum recovery
- ▶ Modular and simple to install
- ▶ Minimal site works required



FRESHPAQ^{SW} RANGE

				2,5	5	10	25	40
	Capacity	Feed flow rate	m ³ /hr	5,6	11,2	22,3	55,6	88,9
		Product flow rate	m ³ /hr	2,5	5	10	25	40
	Power	Installed	kW	35,8	36,9	62,0	111,7	163,0
		Absorbed	kW	15,1	31,5	50,1	104,1	148,2
	Size and weight	Width	mm	1400	1400	1400	1900	2300
		Length	mm	8000	8000	8000	8000	8000
		Weight	kg	1280	2046	2748	5077	7479
Connections	Feed	Size	NB [mm]	50	50	100	150	150
		Pressure	bar	1	1	1	1	1
	Waste	Size	NB [mm]	25	25	50	100	100
		Pressure	bar	2	2	2	2	2
	Product	Size	NB [mm]	25	25	50	100	100
		Pressure	bar	2	2	2	2	2

CONTACT US

**MIDDLE EAST, NORTH AFRICA AND CENTRAL ASIA
UNITED ARAB EMIRATES**
Sharjah +971 6557 2334

**AFRICA & AMERICAS
SOUTH AFRICA**
Johannesburg +27 11 209 9200

**EUROPE
BELGIUM**
Liege +32 427 50779

**AUSTRALIA, PACIFIC & FAR EAST
AUSTRALIA**
Adelaide +61 8 8423 0814